

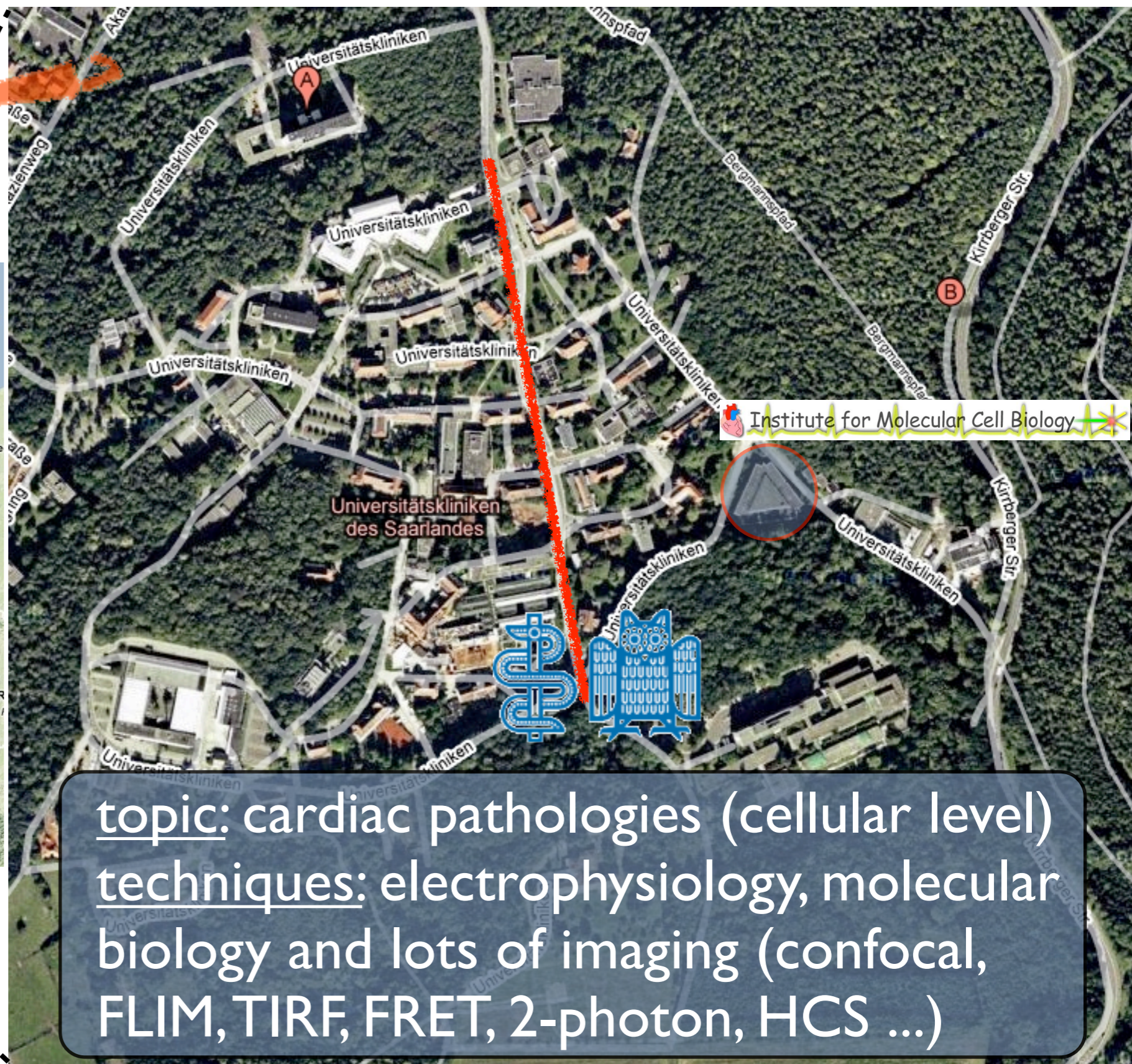
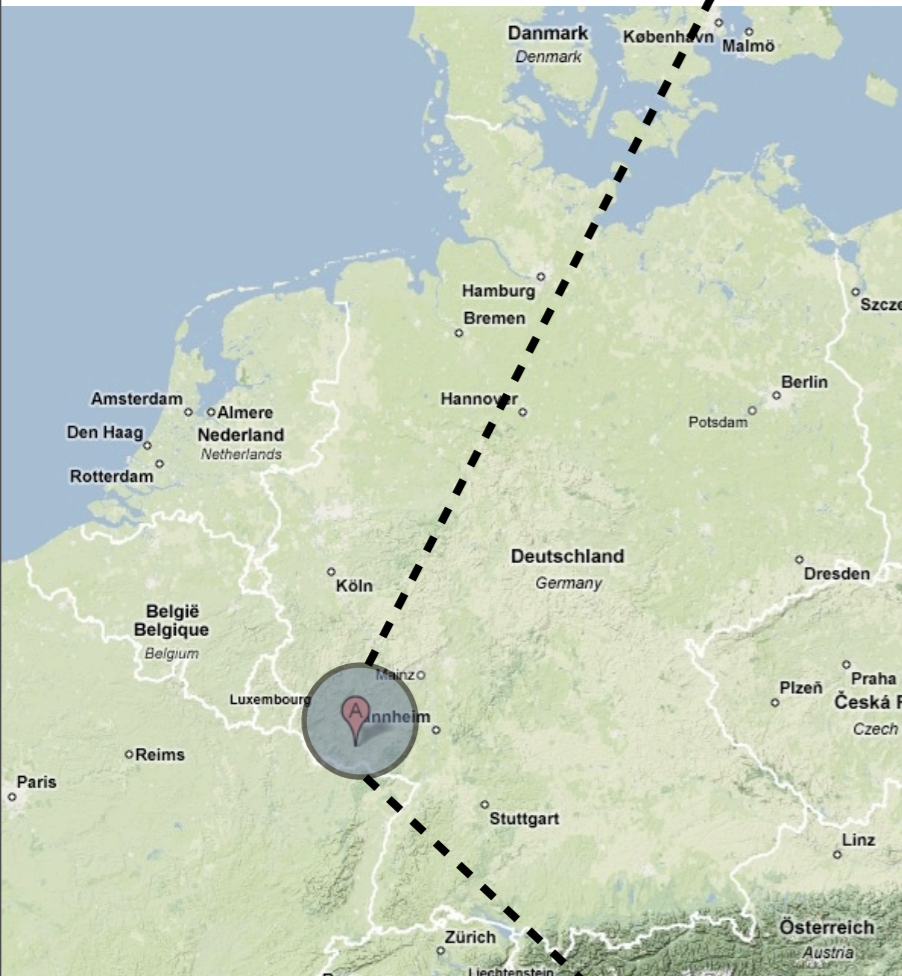
OMERO  
AUTO-importer  
(ATOM)

OME User's Meeting  
19<sup>th</sup> - 20<sup>th</sup> of May

**Oliver Müller** ([oliver.mueller@uks.eu](mailto:oliver.mueller@uks.eu))  
**Saarland University**  
**Faculty of Medicine**



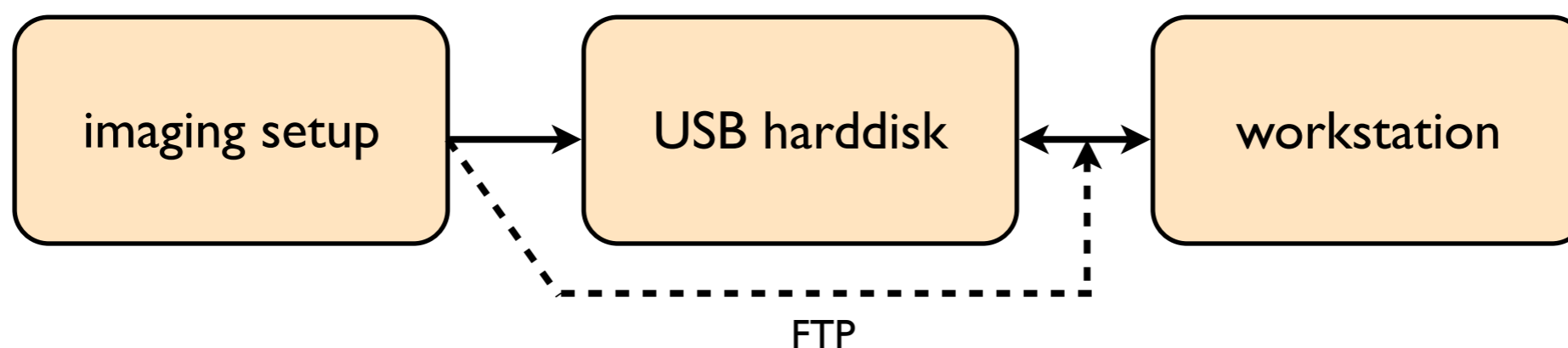
# About us ...



topic: cardiac pathologies (cellular level)  
techniques: electrophysiology, molecular biology and lots of imaging (confocal, FLIM, TIRF, FRET, 2-photon, HCS ...)

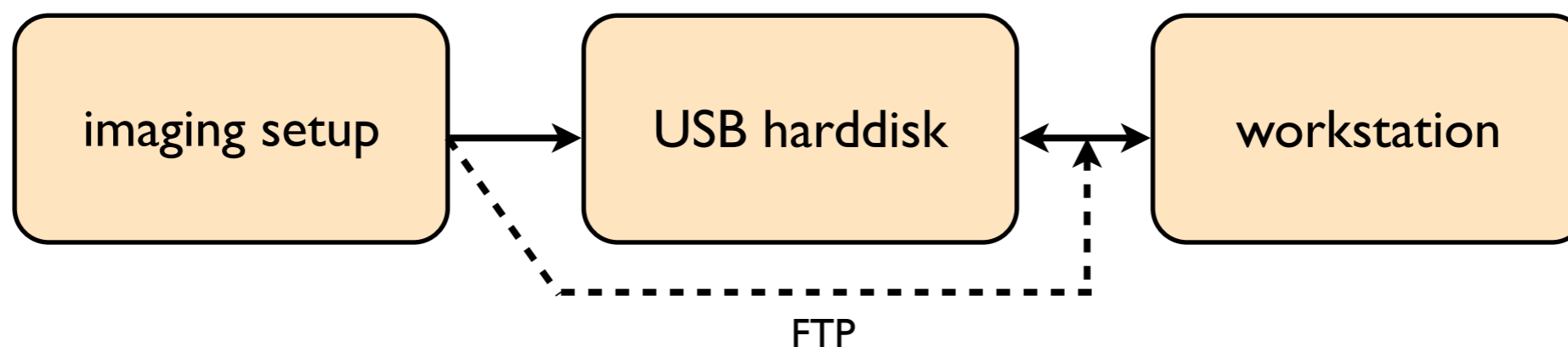
# About us ...

— [ How we used to store our data ...



# About us ...

— [ How we used to store our data ...



**2007**  
we started using OMERO  
(Beta 2.2)

# Data Storage

## — [ Typical issues in our lab

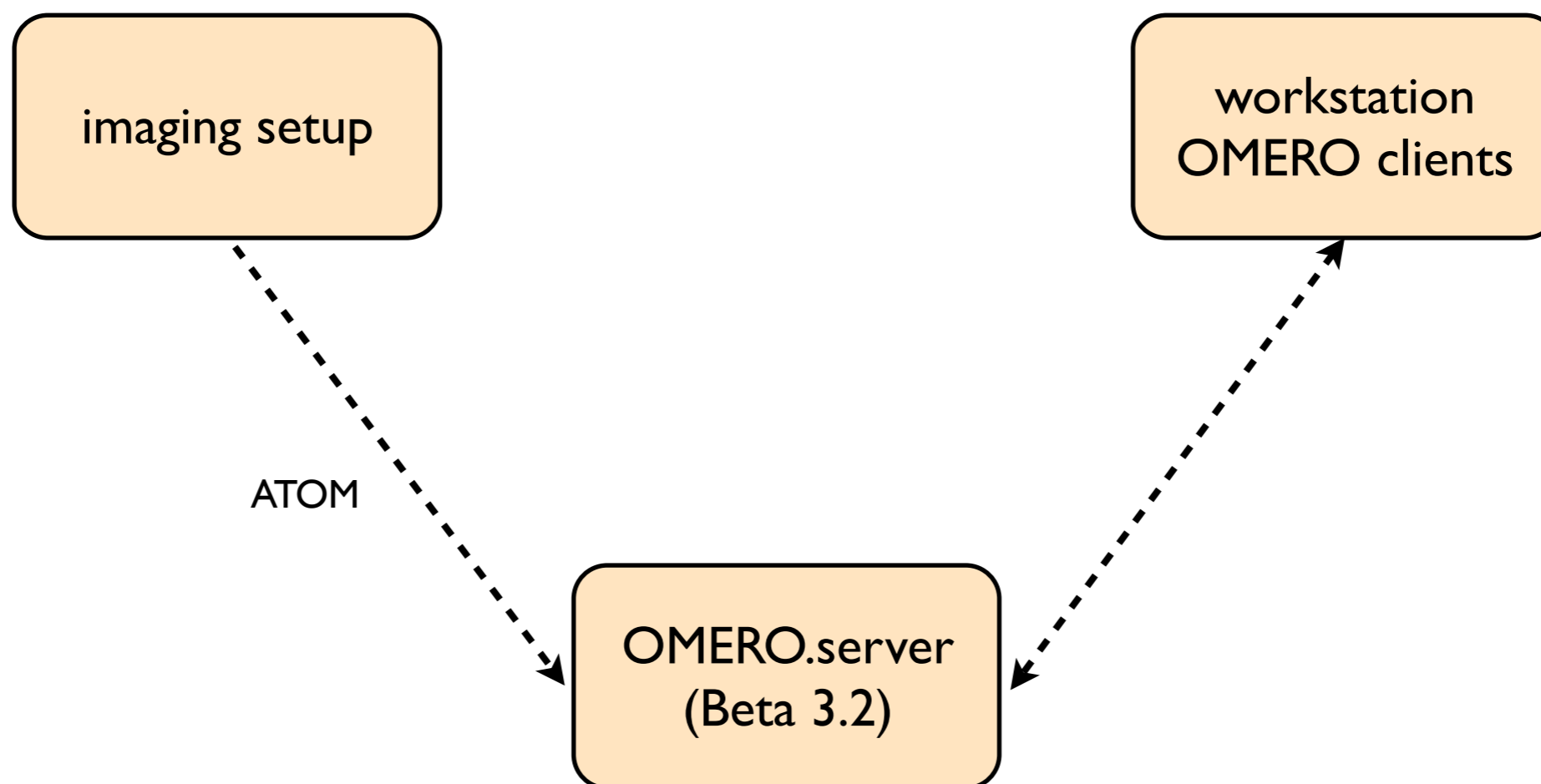
- *Experimenters ask themselves: „Oh, have I forgotten to import my files?!?“*
- *Next experimenter says: „HURRY UP, it's my turn - I've booked the setup!!!“*
- *My boss says: „Please, remove your files from the system!“*

## — [ Solution

- *Automated import of image data into OMERO*

# About us ...

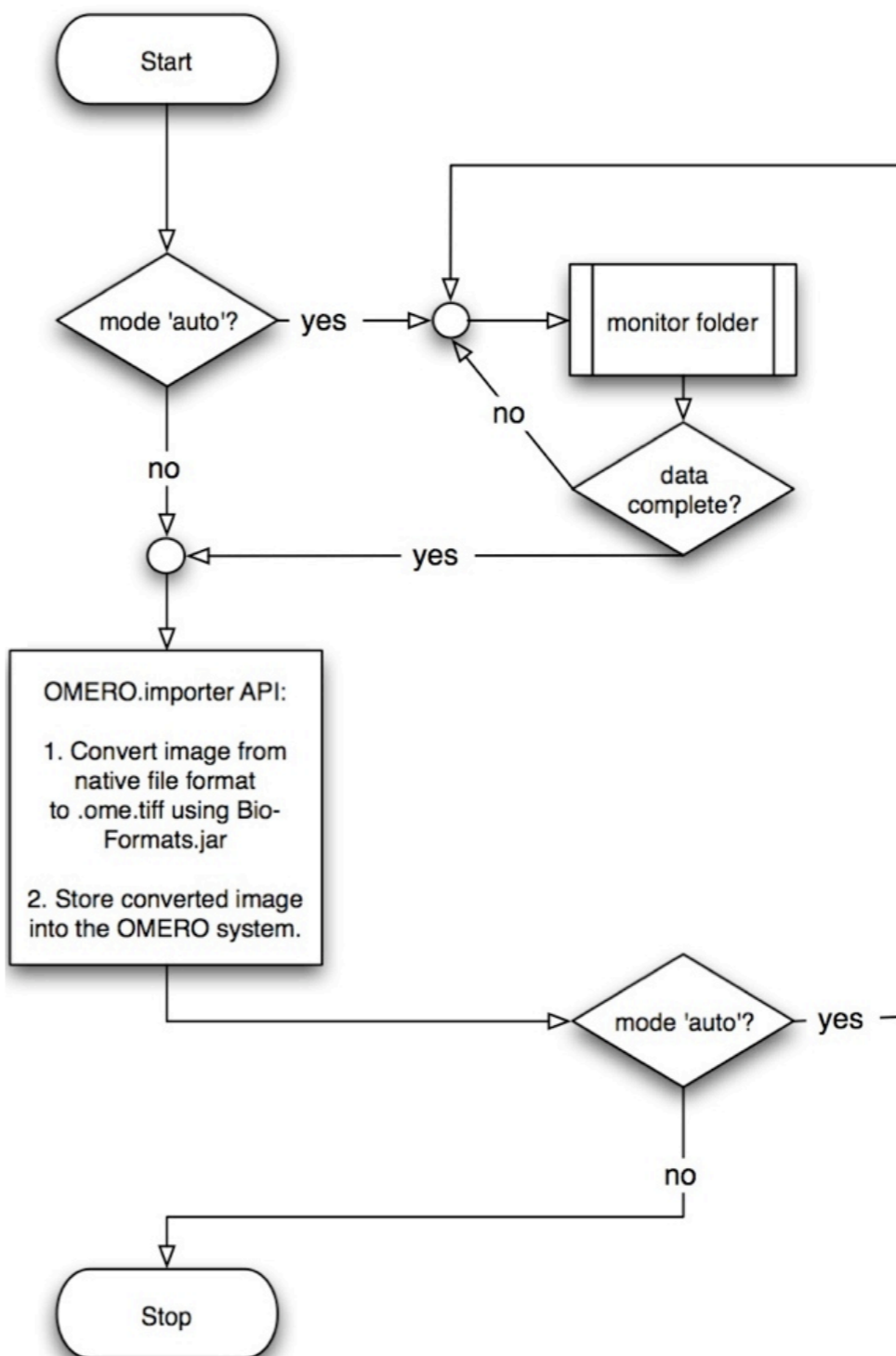
— [ How we store our data ...



# ATOM

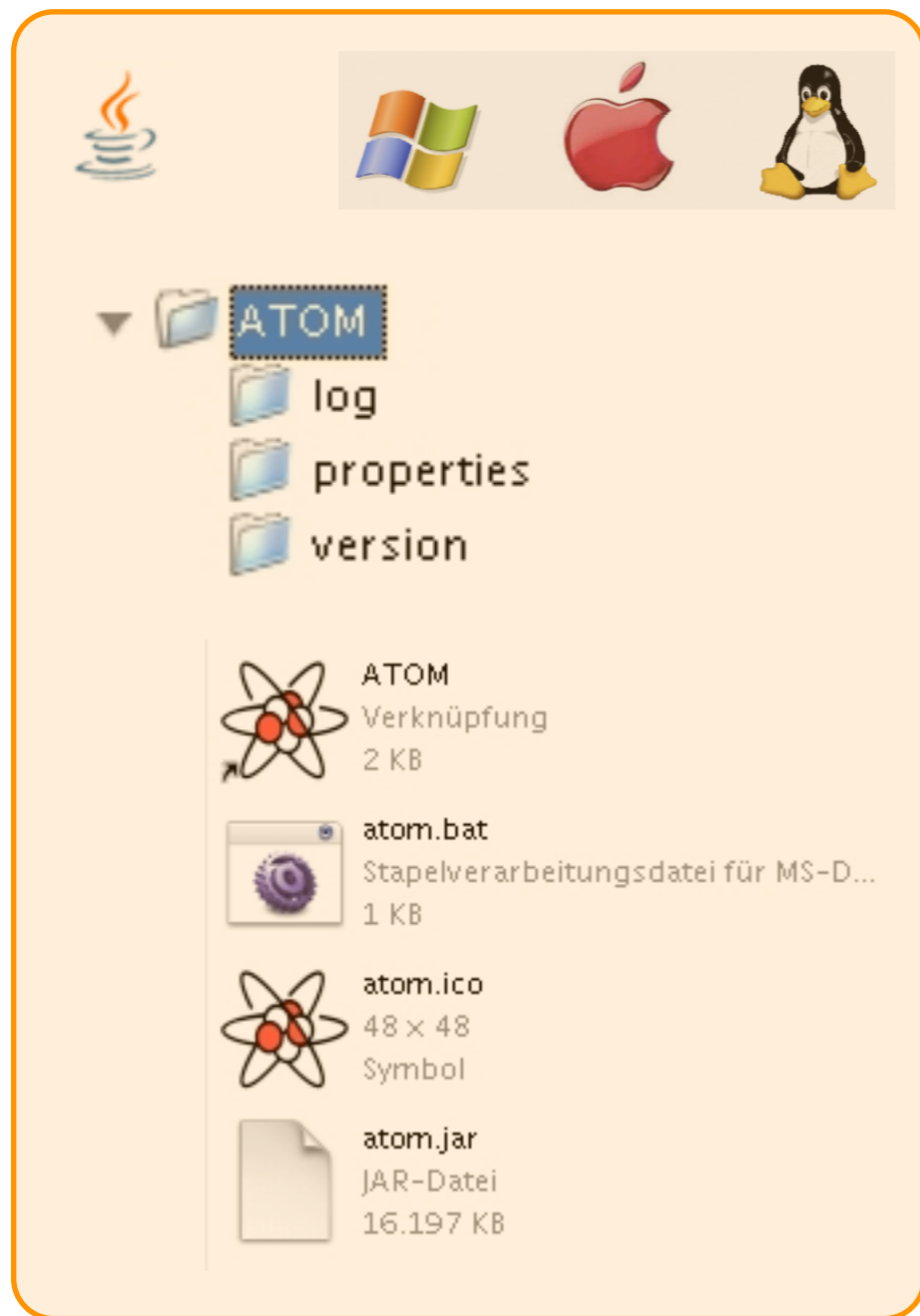
(since OMERO Beta 3.0)

Flow chart AuTO.iMporter



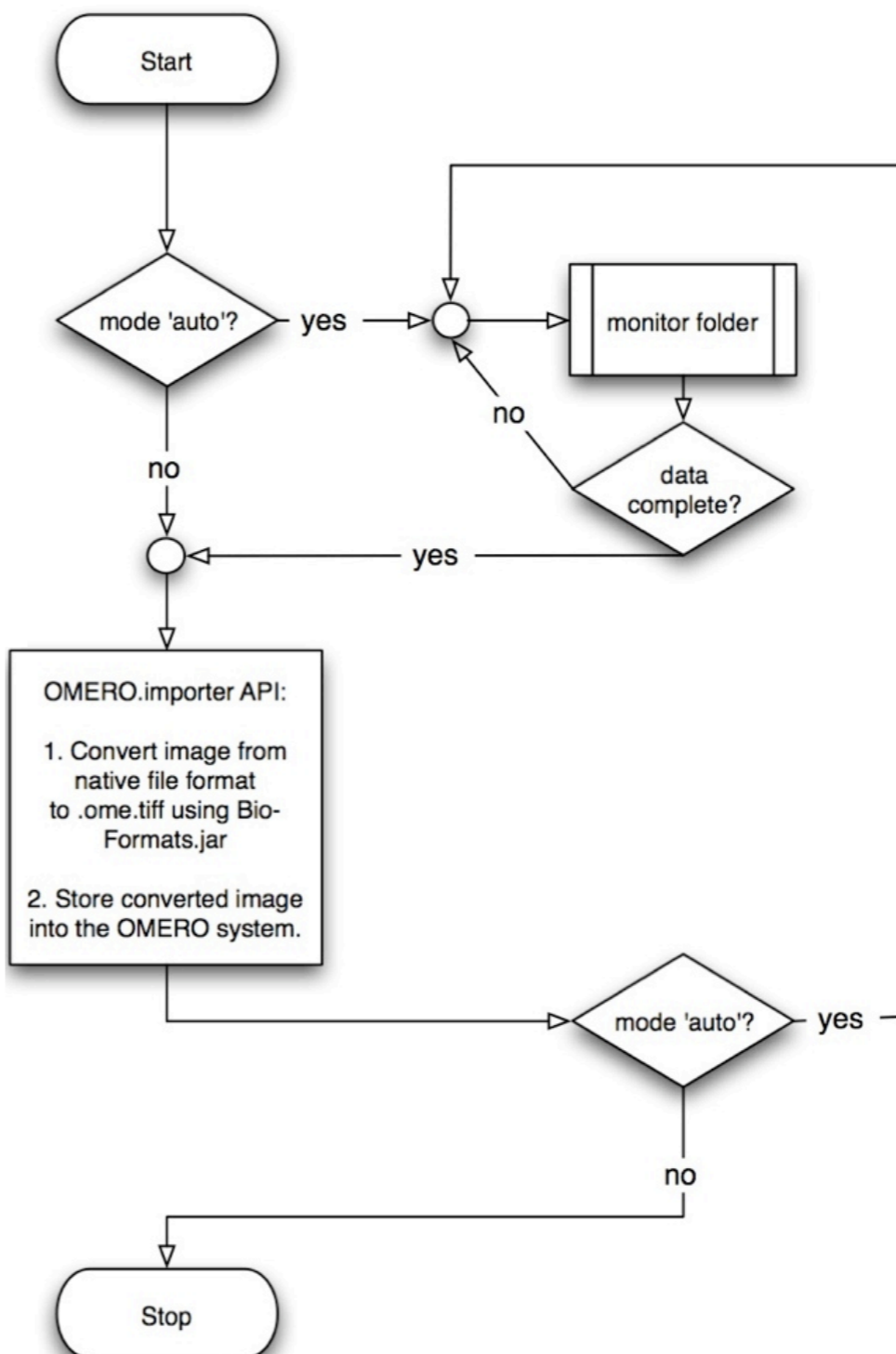
# ATOM

(since OMERO Beta 3.0)



manual mode

Flow chart AuTO.iMporter

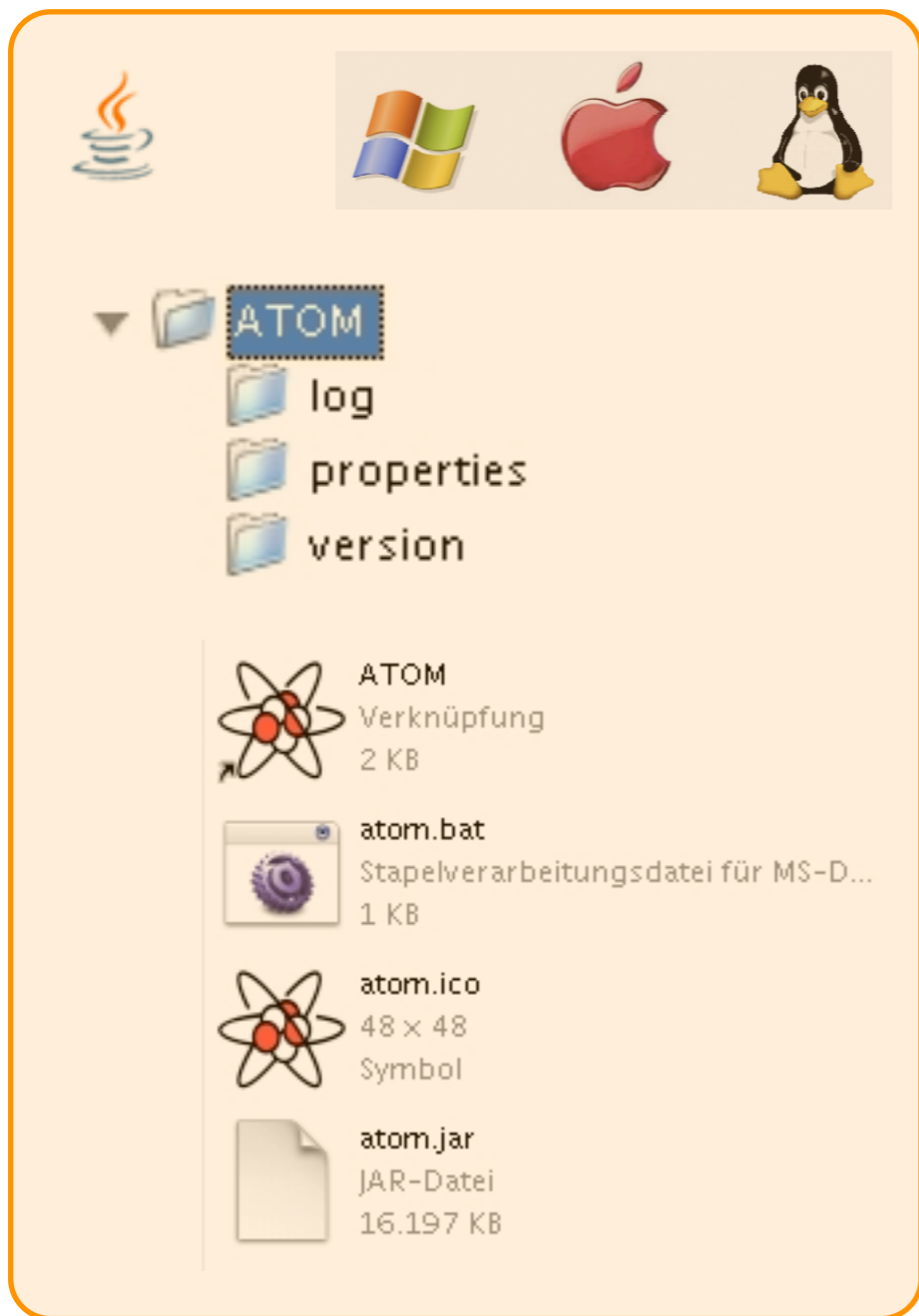




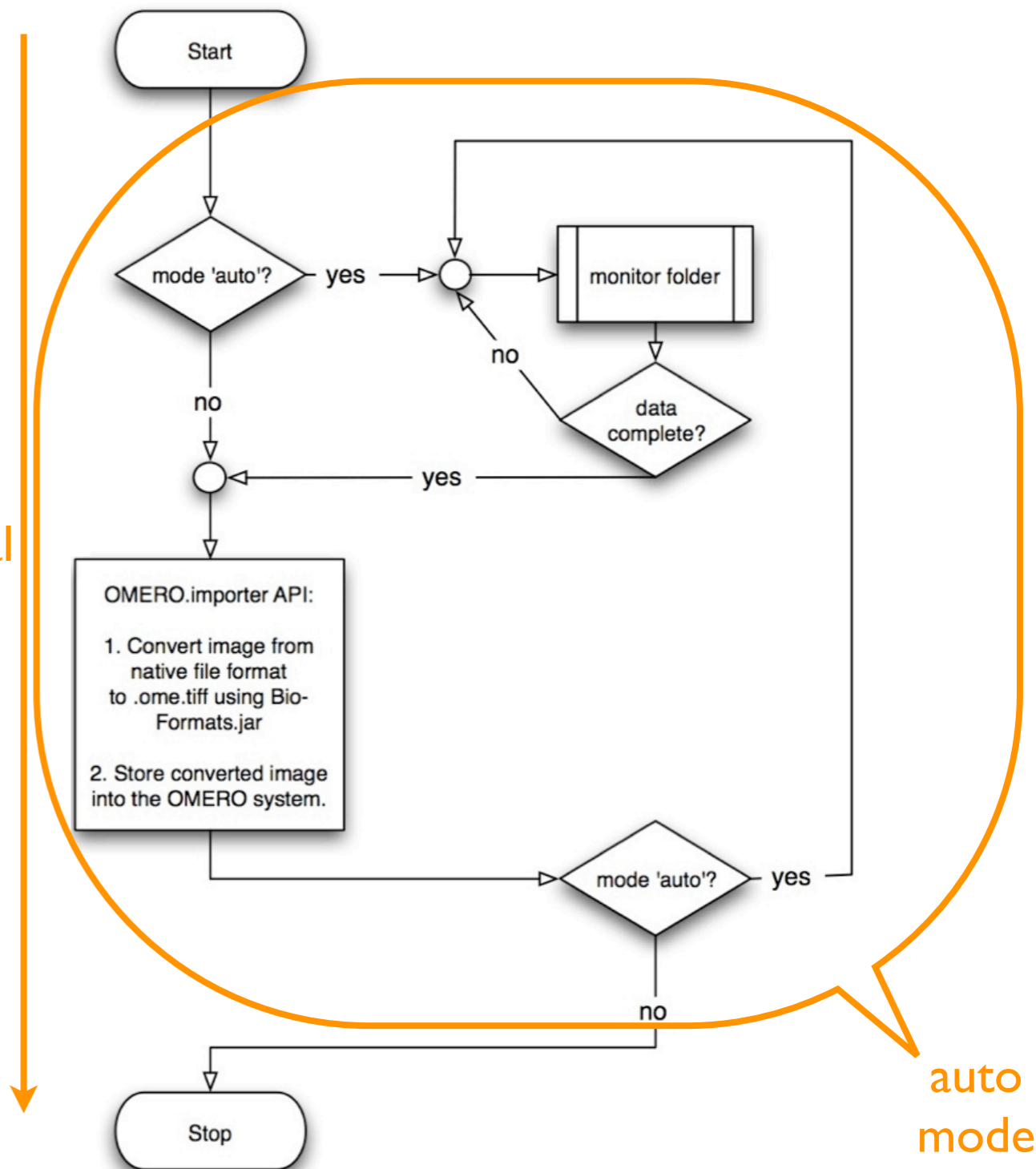
# ATOM

(since OMERO Beta 3.0)

Flow chart AuTO.iMporter



manual mode



auto mode

# Functionality

## Manual Mode

- *specify directory / USB device (e.g. dump 1TB of image data into OMERO)*

## Automatic Mode

- *specify directory for monitoring*
- *specify monitoring time interval*

## Options (otherwise use default values)

- *specify username*
- *specify project / dataset name*
- *archive files in raw format*

## „Wish list“

- [ ATOM and OMERO.fs
  - *functionality of ATOM within OMERO.fs*
  - *„update“ functionality for meta data (e.g. ASCII files)*  
(*„checkout -> edit -> submit“, „drag 'n 'drop“*)

# Thank.you

